



Plans and elevations shown are for illustrative purposes only. FSL reserves the right to make changes in layout, size and appearance of final product. Some FSL employees may also have real estate licenses issued by the Arizona Department of Real Estate. Construction by MHI Residential, Inc. (ROC #149764)

Email us at [SPV@fsl.org](mailto:SPV@fsl.org) or call  
(602) 297-1855 for more information.





ELEVATION A



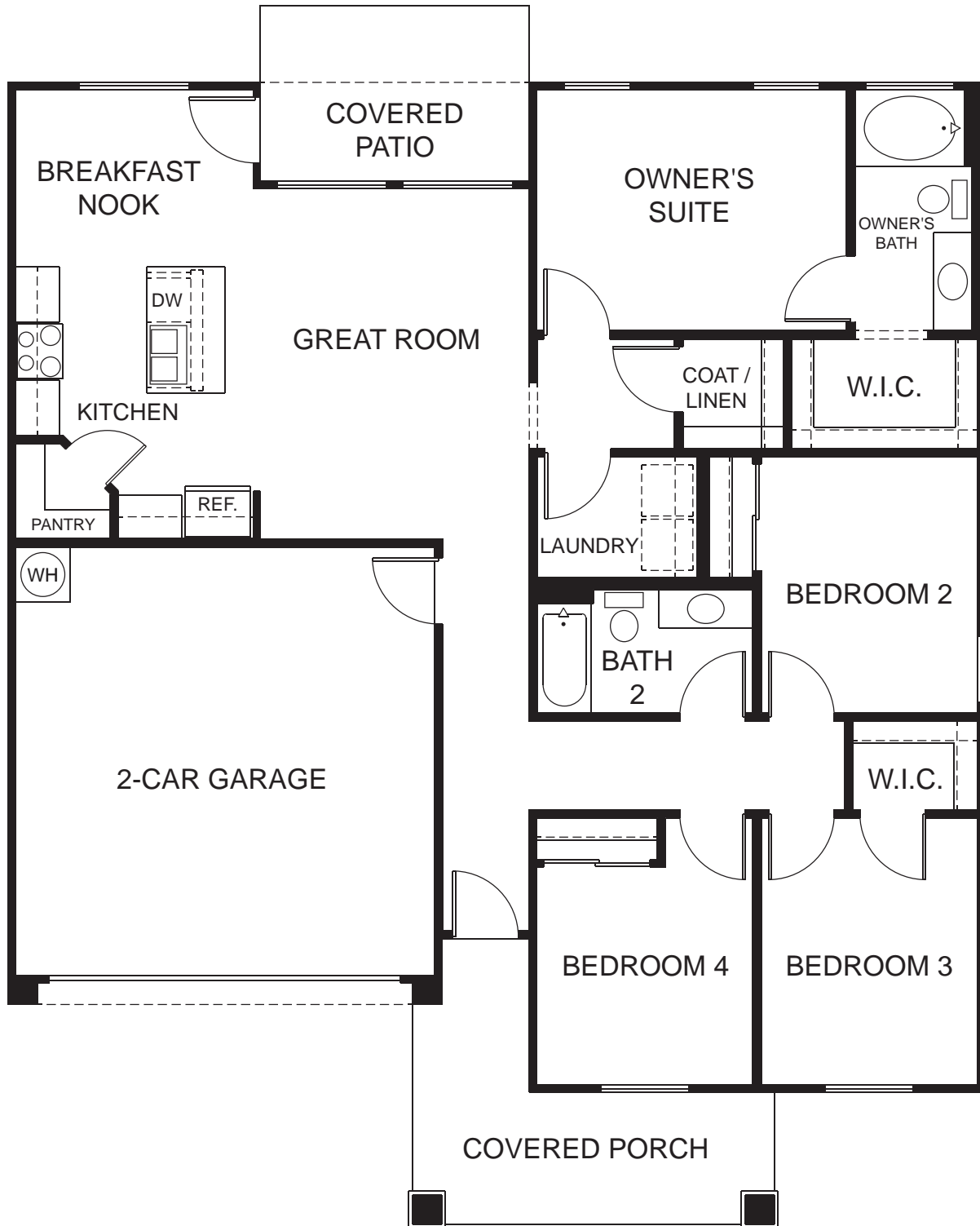
ELEVATION B



ELEVATION C

Plans and elevations shown are for illustrative purposes only. FSL reserves the right to make changes in layout, size and appearance of final product. Some FSL employees may also have real estate licenses issued by the Arizona Department of Real Estate. Construction by MHI Residential, Inc. (ROC #149764)

Email us at [SPV@fsl.org](mailto:SPV@fsl.org) or call  
(602) 297-1855 for more information.



Plans and elevations shown are for illustrative purposes only. FSL reserves the right to make changes in layout, size and appearance of final product. Some FSL employees may also have real estate licenses issued by the Arizona Department of Real Estate. Construction by MHI Residential, Inc. (ROC #149764)

Email us at [SPV@fsl.org](mailto:SPV@fsl.org) or call  
(602) 297-1855 for more information.



ELEVATION A



ELEVATION B

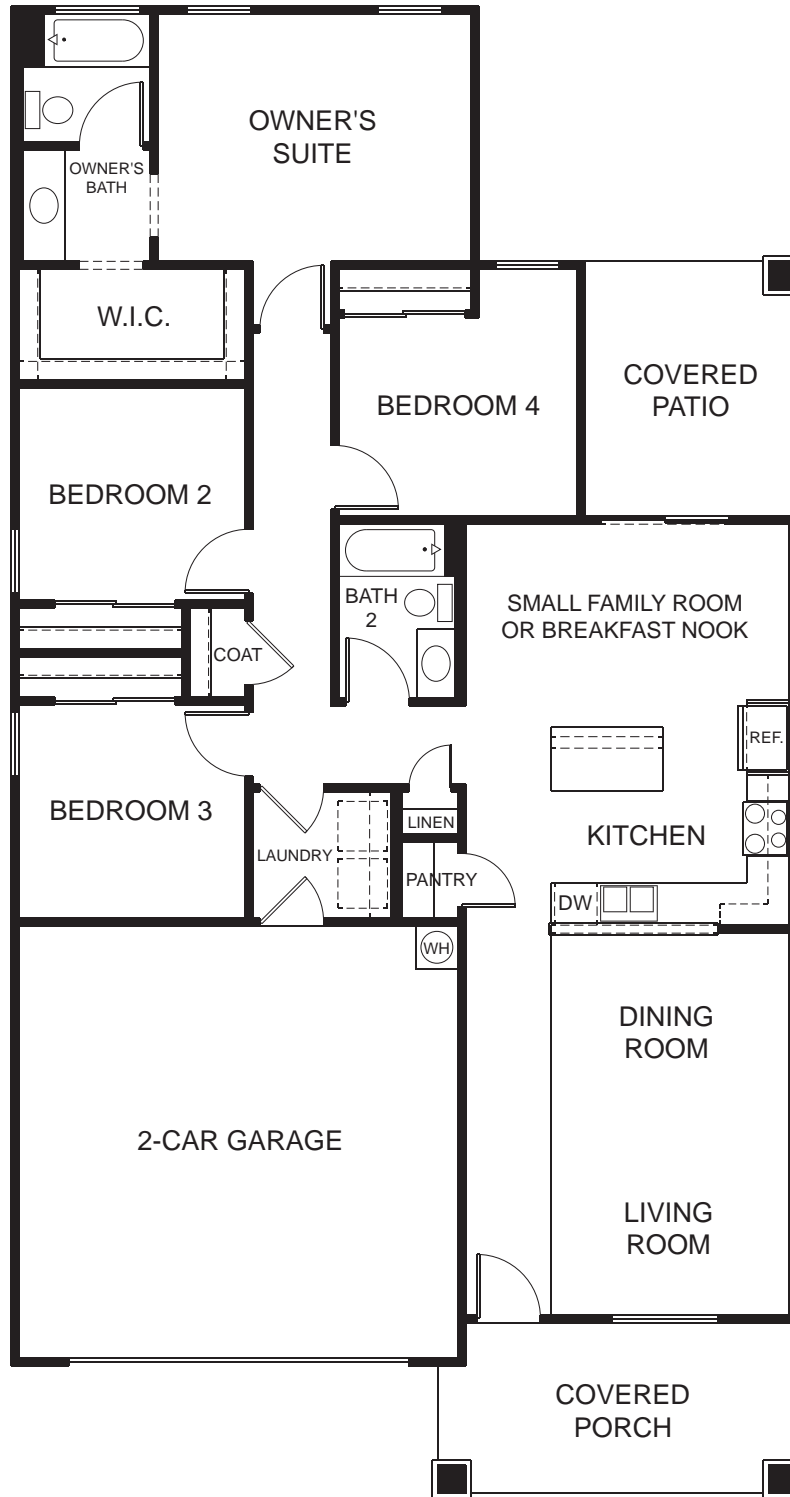


ELEVATION C

Plans and elevations shown are for illustrative purposes only. FSL reserves the right to make changes in layout, size and appearance of final product. Some FSL employees may also have real estate licenses issued by the Arizona Department of Real Estate. Construction by MHI Residential, Inc. (ROC #149764)

Email us at [SPV@fsl.org](mailto:SPV@fsl.org) or call  
(602) 297-1855 for more information.





Plans and elevations shown are for illustrative purposes only. FSL reserves the right to make changes in layout, size and appearance of final product. Some FSL employees may also have real estate licenses issued by the Arizona Department of Real Estate. Construction by MHI Residential, Inc. (ROC #149764)

Email us at [SPV@fsl.org](mailto:SPV@fsl.org) or call  
(602) 297-1855 for more information.





ELEVATION A



ELEVATION B

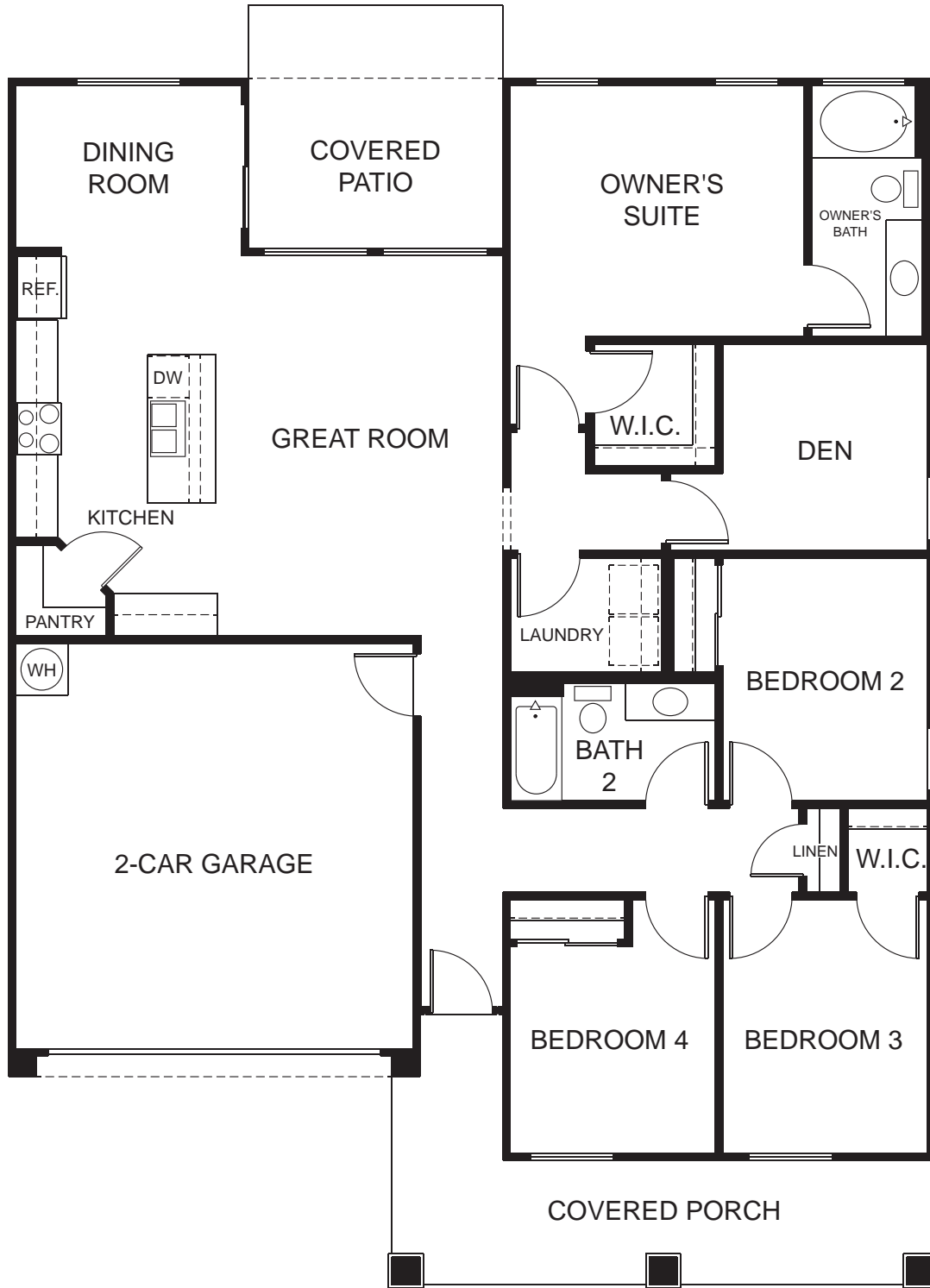


ELEVATION C

Plans and elevations shown are for illustrative purposes only. FSL reserves the right to make changes in layout, size and appearance of final product. Some FSL employees may also have real estate licenses issued by the Arizona Department of Real Estate. Construction by MHI Residential, Inc. (ROC #149764)

Email us at [SPV@fsl.org](mailto:SPV@fsl.org) or call  
(602) 297-1855 for more information.





Plans and elevations shown are for illustrative purposes only. FSL reserves the right to make changes in layout, size and appearance of final product. Some FSL employees may also have real estate licenses issued by the Arizona Department of Real Estate. Construction by MHI Residential, Inc. (ROC #149764)

Email us at [SPV@fsl.org](mailto:SPV@fsl.org) or call  
(602) 297-1855 for more information.



ELEVATION A



ELEVATION B



ELEVATION C

Plans and elevations shown are for illustrative purposes only. FSL reserves the right to make changes in layout, size and appearance of final product. Some FSL employees may also have real estate licenses issued by the Arizona Department of Real Estate. Construction by MHI Residential, Inc. (ROC #149764)

Email us at [SPV@fsl.org](mailto:SPV@fsl.org) or call  
(602) 297-1855 for more information.

